

The TRITEC logo consists of the word "TRITEC" in a bold, black, sans-serif font, centered within a bright yellow rectangular border. The background of the entire page is a photograph of a solar panel array on a gravel roof, with trees and a clear sky in the background.

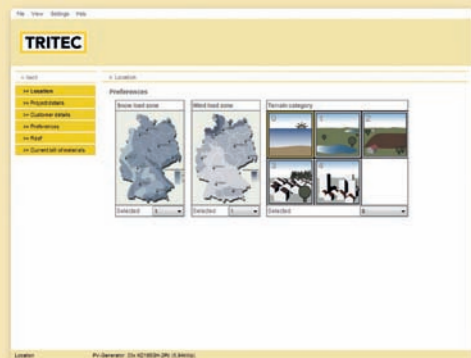
TRITEC

energy for a better world

TRI-STAND

**the photovoltaic mounting system for
pitched roofs, flat roofs and building exteriors**

- Optional as insertion or clip system
- Colour choice: natural or black
- Certificated for wind and snow loads
- Tested for statics



In addition to the dead weight of the photovoltaic system, mainly wind and snow loads affect the system components and the substructure. For this reason, each system must be calculated and planned for your individual requirements and external influences.



On principle, the structural calculations of all roofs must be checked by authorised experts. An additional basic requirement for the installation of photovoltaic systems on roofs: The current condition of the roof must be such, that renovation will not become necessary for a period of at least 20 years.



Depending on the type of roof, there are different ways of affixing the installation system to the roof: On pitched roofs the systems are installed with roof hooks, on trapezoidal and cement asbestos roofs with hanger bolts, on flat roofs either with gravel-bordered Renosol trapezoidal plates or with hanger bolts and building exterior systems are directly screwed into the building exterior.



The horizontal TS insertion profiles are affixed using the connecting element SafeClick SC.



All cables are laid in parallel to the installed rails. Now the modules can be inserted. The modules are held in place by gravity and must not be fixed in place by screws.

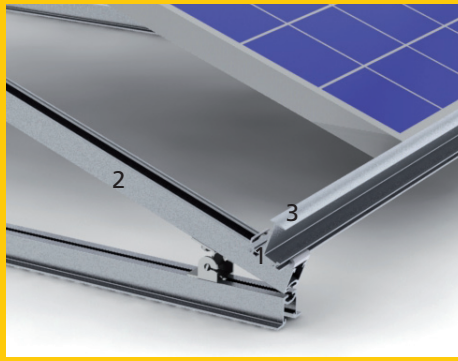


The installation of the photovoltaic system is now completed and results in a cohesive module system layer on the roof or the building exterior.



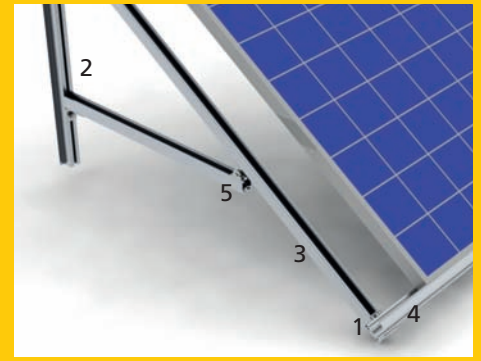
Pitched roof

- 1 Roof hook
- 2 UP universal profiles
- 3 TS insertion profiles



Flat roof

- 1 SafeClick SC
- 2 UP universal profiles
- 3 TS insertion profiles



Building exterior

- 1 SafeClick SC
- 2 UP-S universal profile
- 3 UP universal profile
- 4 TS insertion profile
- 5 FlexFix

Quality and safety

We guarantee our clients that all profiles and accessories manufactured under the original label TRI-STAND, have a 5 year manufacturer's guarantee from the delivery date, regarding soundness and technical functional capability.

TRI-STAND has successfully passed the TÜV (Technical Inspection Agency) tests. For the complete Guarantee Certificate and the Certificate of No Objection, visit our web site at www.tritec-energy.com/tri-stand-en.

Patent applications have been filed for SafeClick and FlexFix.

www.tritec-energy.com



Company stamp: