



**TRITEC**

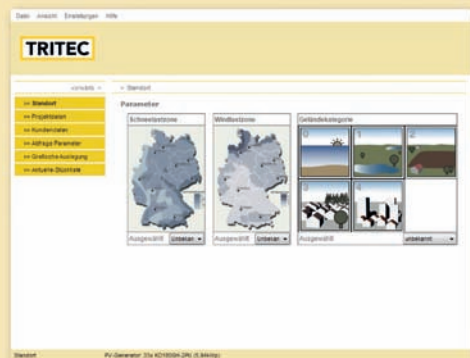
energy for a better world

## **TRI-ROOF** the flexible roof integration system

- Compatible for framed module types\*
- Simple exchange of modules
- Replaces existing roofing
- Special profiles for maximum impermeability
- Closed module surface for aesthetically attractive PV systems

\*from the TRITEC range





**Taking into consideration different loads**  
Photovoltaic systems are exposed to strong forces: In addition to their own weight, the system components and sub-structure experience great wind forces and snow loads. Therefore, each system is calculated and designed using the TRITEC design software TRI-DESIGN.



**Impermeable roof**  
The roof integration system TRI-ROOF replaces the existing roofing completely. The bulk of the rain water is discharged from the PV modules. The remaining water is collected drained off in the specifically developed water-bearing carrier profiles, so that the impermeability of the roof is ensured. The additional use of a water-draining sarking is however recommended.



**Off-the-shelf modules**  
TRI-ROOF offers unlimited freedom when choosing modules: The mounting system is suited for all framed module types of all module manufacturers in the TRITEC range. The simple insertion system was designed to be used independent of the module manufacturer. Thus, almost all framed modules can be installed.



**Versatile roof connection plates**  
The mounting system TRI-ROOF is supplied as a complete set. This includes as standard also the edge connection plates for tiled roofs, in addition to the profiles and insertion rails. The plates can be adjusted to the respective module size and thus offer the greatest flexibility possible.



**Aesthetic solution**  
The edge connection plates are made from aluminium with an anthracite coating. Combined with black anodised insertion profiles and modules with black frames, every roof with a slope of more than 15° receives an architecturally and aesthetically sophisticated PV system.



**Simple maintenance**  
The installation of the modules does not require screws: they are locked into the insertion rails by gravity. Thus, the modules can easily be removed from the construction, making the maintenance of the PV system quick and uncomplicated.



**Quality and safety**

We guarantee our clients that all profiles and accessories manufactured under the original label TRI-ROOF carry a manufacturer's guarantee of sound condition and technical efficiency of 5 years from the date of delivery.

The complete guarantee certificate and the certificate of compliance can be found on our web site at [www.tritec-energy.com/tri-roof](http://www.tritec-energy.com/tri-roof).

[www.tritec-energy.com](http://www.tritec-energy.com)

Company stamp: